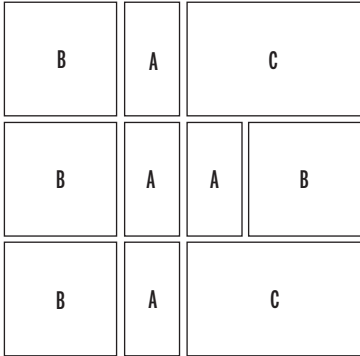




Pallet Overview 2480



Specifications per pallet

	Imperial	Metric
Cubing	127.44 ft.²	(11.84 m ²)
Weight	2560 lbs	(1161 kg)
Number of rows = 12	10.62 ft. ² /row	(0.99 m ²)/row



A

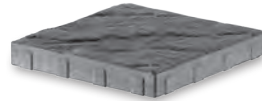


Unit dimensions in (mm) Units/pallet

Height	1 3/4	(45)	48 units
Width	13	(330)	
Length	6 1/2	(165)	

Unit dimensions in (mm) Units/pallet

B



Height	1 3/4	(45)	48 units
Width	13	(330)	
Length	13	(330)	

Unit dimensions in (mm) Units/pallet

C



Height	1 3/4	(45)	24 units
Width	13	(330)	
Length	19 1/2	(495)	

Applications

Concrete system overlay.

Notes

Blu 45 mm should only be used to overlay existing concrete patios.

See page 158 for more technical information and installation details.

